



**Staffordshire
Pension Fund**
Local Government Pension Scheme

Staffordshire Pension Fund Administration Update

Simon Jackson

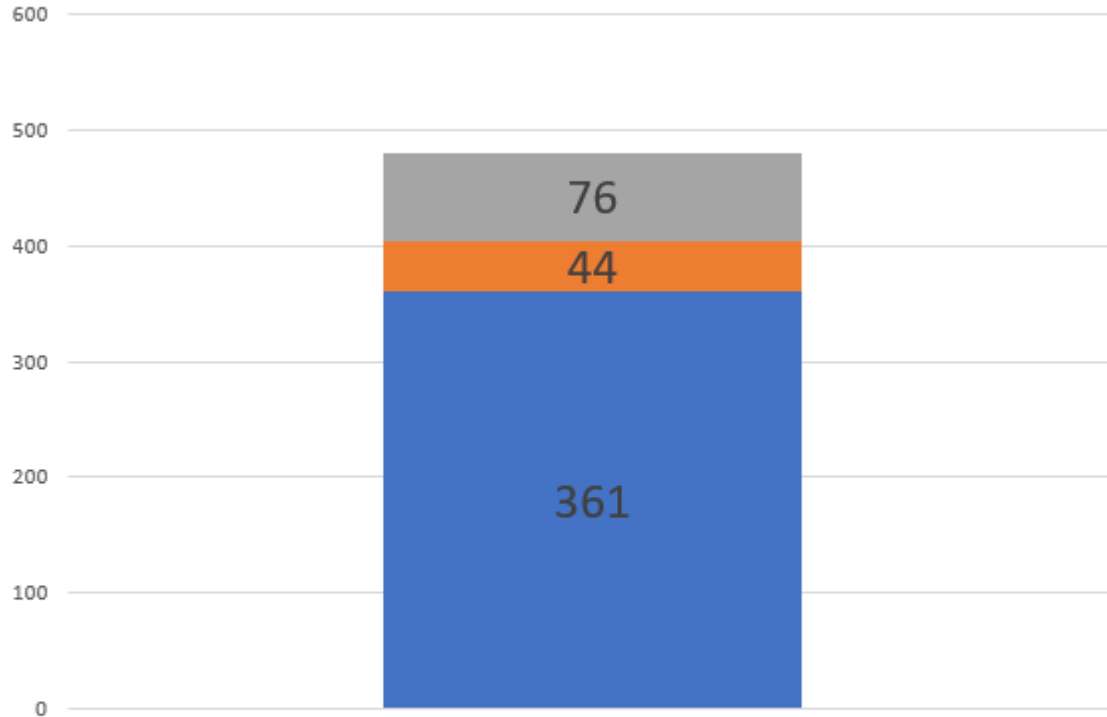
(Strategic Pensions Manager)

Lisa Kelly

(Pensions Administration Manager)

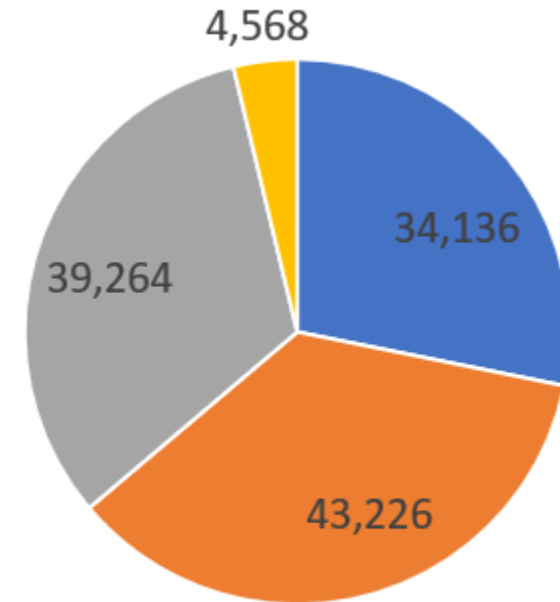
Fund Data as at 31 March 2023

481 Scheme Employers



- Admitted Bodies (Contractors, Housing Associations)
- Resolution Bodies (Town and Parish Councils)
- Scheduled Bodies (Academies, Councils, Fire, Police)

121,194 Scheme Members

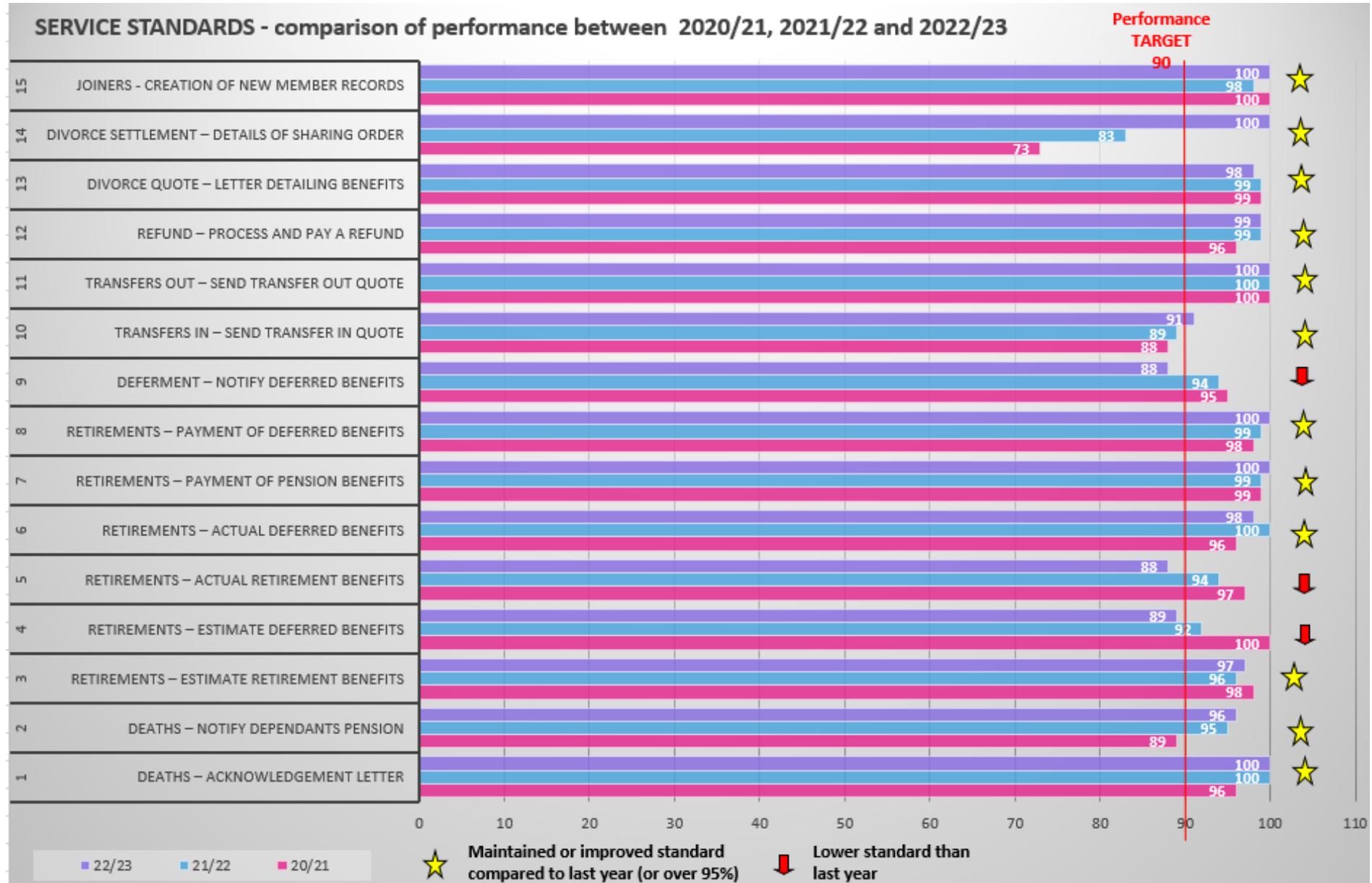


- Active Contributors
- Deferred
- Pensioners
- Dependants

Last 12 months - Administration Team

- **Service Standards maintained 90% target for the majority of our key areas of activity.**
- **Pensions Payroll Enhanced Admin to pay implementation.**
- **Completed first Digital Proof of Life concept for overseas pensioners - biometric facial recognition.**

Service standards



22/23 Annual Benefit statements

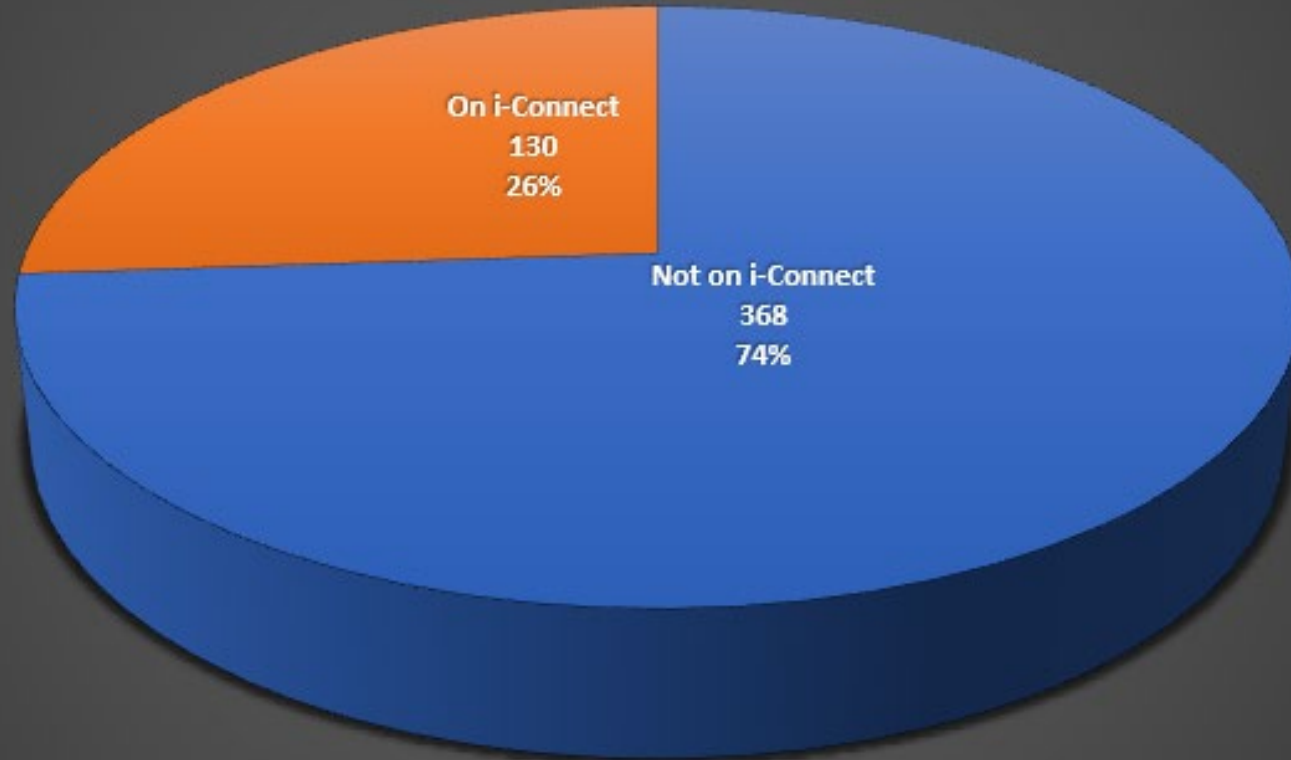
- **30,998 - Active scheme member statements**
- **42,745 - Deferred scheme member statements**

i-Connect

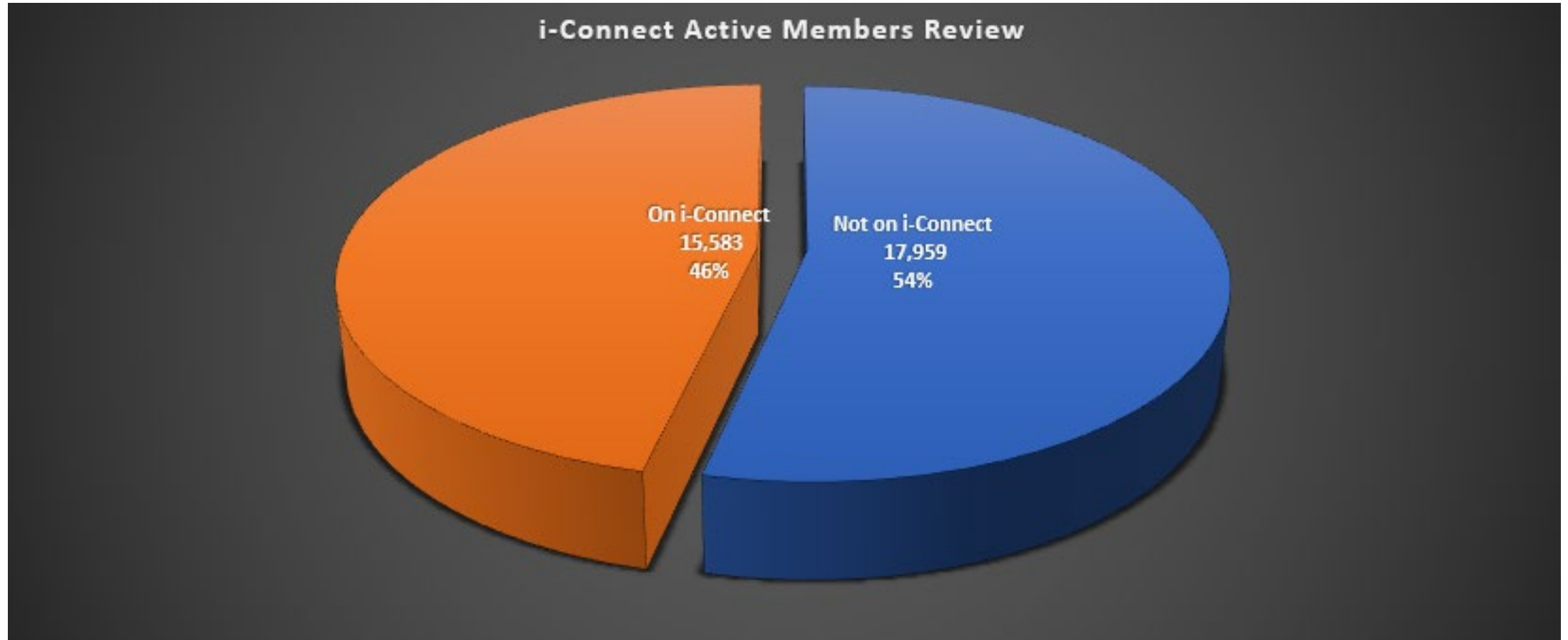
- **Electronic monthly data returns**
- **Working closely to onboard scheme employers**
- **Increased resource**

Last 12 months - Systems & Data

i-Connect Employer Review



Last 12 months - Systems & Data



Employer Communications

- **Employer Focus Newsletter (monthly)**
- **Employer Focus Peer Group (quarterly)**
- **Fund Website - continue to make this more relevant and informative**
- **Webinars - for employers and scheme members**
- **My Pensions Portal (MPP) - value continued support from employers in encouraging LGPS scheme members to utilise MPP**

Administration challenges ahead...

- **To recruit and retain experienced colleagues**
- **To continue to maintain Service Standards at the 90% plus target for all our key areas of activity**
- **TPR single code of practice - review compliance**

Administration challenges ahead...

- **Continue to promote and encourage wider use of My Pensions Portal, targeting groups of scheme members based on demographics**
 - **45% - Active scheme members**
 - **26% - Deferred scheme members**
 - **24% - Pensioner scheme members**
- **To prepare for the national Pensions Dashboard Programme even though go live deferred to October 2026**
 - **Data cleanse**
 - **Appoint Integrated Service Provider (ISP)**

Administration challenges ahead...

- **McCloud Remedy Update - Background**
- **Reforms to public sector pensions introduced 2014/2015**
- **LGPS moved to CARE scheme**
- **Protections introduced for older scheme members**
- **December 2018 - Court of appeal ruled discrimination for younger scheme member**
- **LGPS regulations amended 1 October 2023, McCloud remedy**
- **Younger qualifying member receive underpin calculation**
- **Most scheme members will not see an increase to their pension**

Administration challenges ahead...

- **McCloud Remedy - To Do List**
 - **Disclose LGPS regulation changes to in scope scheme members by 31 December 2023**
 - **Collect final outstanding data from scheme employers by 31 December 2023 - thank you for data supplied**
 - **Apply McCloud remedy for benefit calculations from 1 October 2023**
 - **Revisit calculations for in scope scheme members (back to 1 April 2014)**
 - **Annual Benefit Statements 2025 to include underpin test**

**Please engage with us, please provide us with feedback
and please continue to help us to help you**

Thank you.

Any questions?